

THE HOPE OF CURING CANCER HAS A NAME: GUSTAVE ROUSSY



**GUSTAVE
ROUSSY**
CANCER CAMPUS
GRAND PARIS





A WORLDWIDE REPUTATION

Ranked among the world's top four oncology hospitals*, Gustave Roussy is an internationally renowned institution dedicated to cancer prevention, care, research and education.



Specialising in rare and complex tumours at all ages, Gustave Roussy is a leader in cancer research in both France and Europe.

The medical and research teams, driven by passion and expertise, work every day to advance treatments and offer patients the best possible therapeutic options.

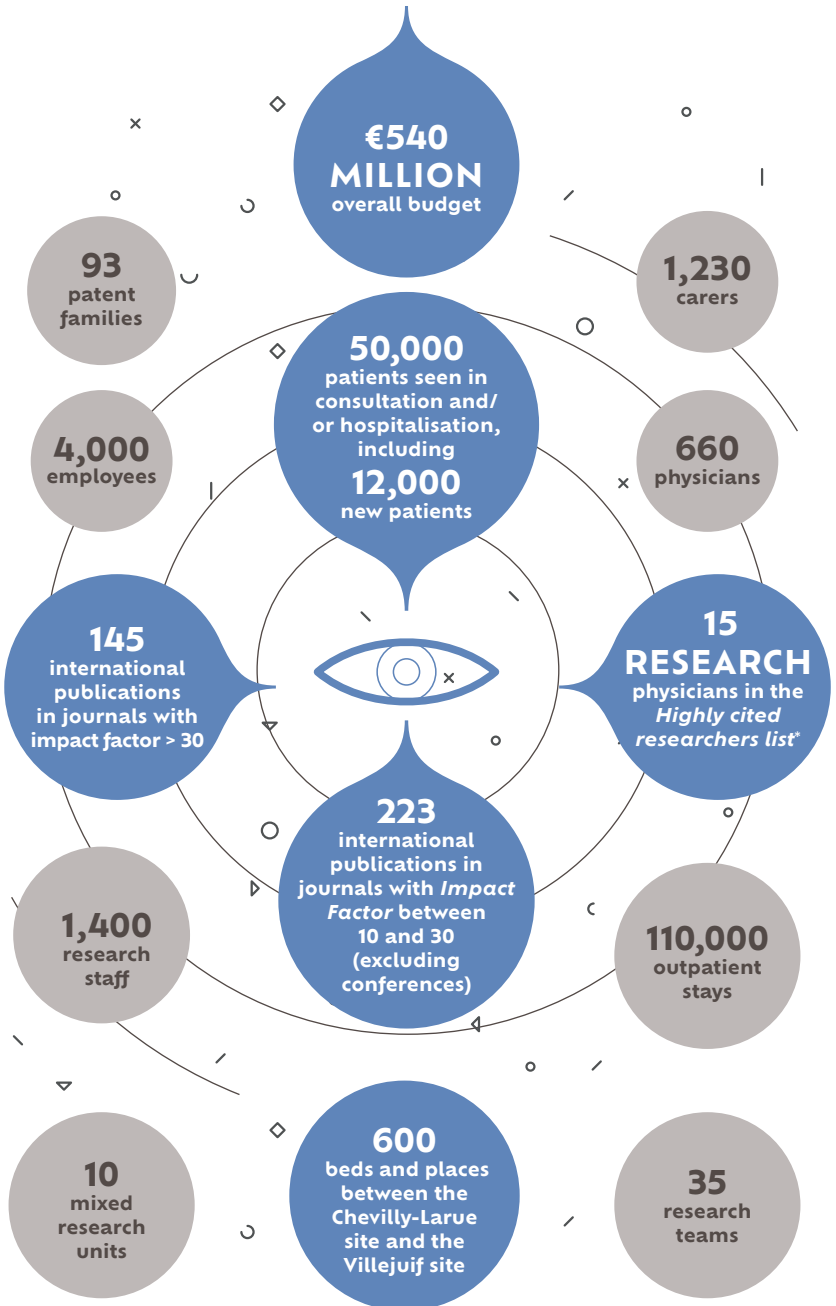
The Paris-Saclay Cancer Cluster and the future 33,000 m² research centre embody the vision of an integrated ecosystem where healthcare professionals, researchers and entrepreneurs work together to advance the fight against cancer.



* Newsweek 2024 ranking



EXCELLENCE IN ONCOLOGY CARE



*Clarivate/Web of Science ranking



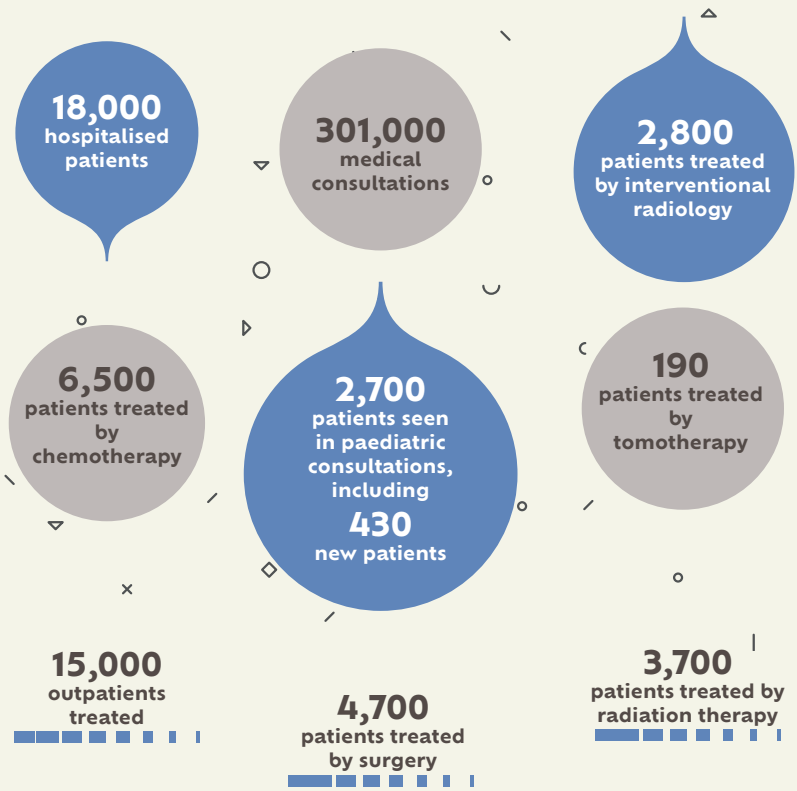
INNOVATIVE AND PERSONALISED CARE PATHWAYS

The Gustave Roussy teams are resolutely committed to providing high-quality care throughout the entire patient care process. This care is designed to be less and less invasive, increasingly early and personalised, while taking into account patients' quality of life and psychological well-being.

Operating theatres, intensive care units, state-of-the-art robotic surgery, ambulatory surgery and interventional radiology platforms, chemotherapy robots and a genomics platform for liquid biopsies: the Institute has state-of-the-art infrastructure. Advanced radiotherapy treatments are also offered.

As part of its 2020-2030 institutional strategic plan, Gustave Roussy aims to redefine precision medicine by detecting cancer risks early with the Interception programme and offering the fastest possible diagnoses. The Institute customises treatments through innovations such as organoids and 3D pill printing, while anticipating relapses with artificial intelligence.

The PRISM University Hospital Institute will pave the way for predictive medicine for all, while programmes such as Interval and My Care will strengthen post-cancer support to improve patients' quality of life over the long term.





A FUTURE OF CLINICAL DISCOVERIES

Since the launch of the Paris-Saclay Cancer Cluster, Gustave Roussy has been part of an ecosystem that promotes excellence in collaborative research to accelerate innovative treatments and improve care.



The Institute, with its experts in fundamental, clinical and exploratory research, is strengthening its capabilities through the Prism programme, which has been awarded the Institut Hospitalo-Universitaire (IHU - University Hospital Institute) label, and which personalises cancer treatments from the moment of diagnosis. A new 33,000 m² building, planned for the end of 2027, will be built on the Grand Parc campus. This innovative centre will double the number of research teams and centralise technology platforms, laboratories and communal areas, strengthening collaboration and innovation within the Paris-Saclay Cancer Cluster.

368
publications in
journals with an
impact factor
greater than 10
(excluding
conferences)

563
studies open to inclusion,
including
84%
therapeutic trials and
58%
sponsored by industry

63
research projects
sponsored
by Gustave Roussy
open to inclusion

37%
of patients
followed are in-
cluded in clinical
studies

391
patients included
in early trials
(phase I and I/II)

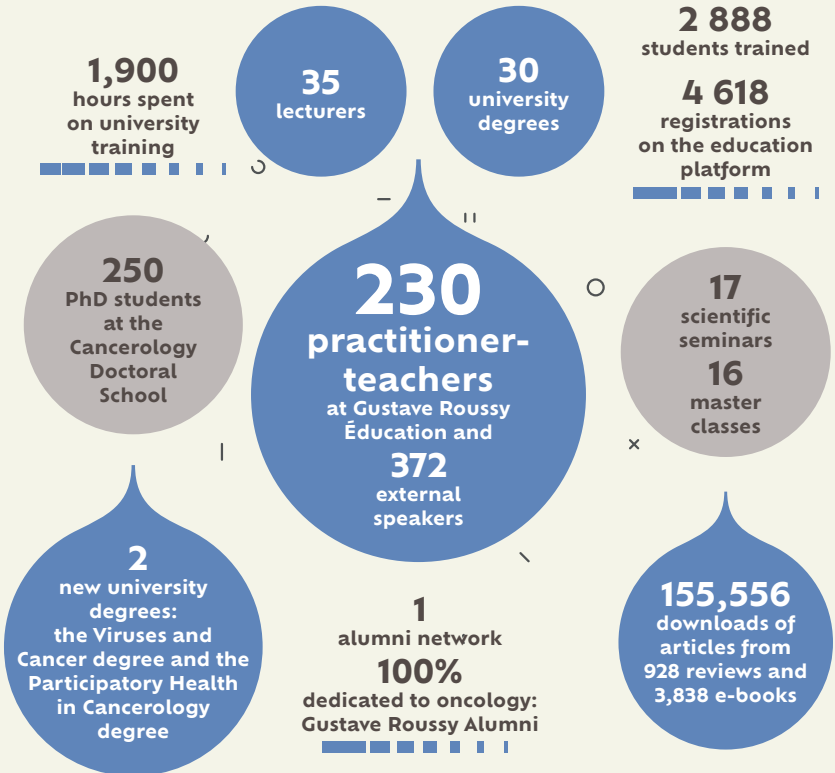


BUILDING THE NEXT GENERATION OF EXPERTS

Education and training are at the core of the Institute's culture, and it is committed to passing on its expertise to doctors, researchers, carers and students involved in the fight against cancer.



Through its Gustave Roussy Education cluster, affiliated to the Université Paris-Saclay, the Institute is actively committed to preparing the next generation of professionals. This includes the continuous improvement of its academic programmes, the enrichment of its educational resources and the development of specialised training, aimed at promoting excellence and innovation in cancer research.



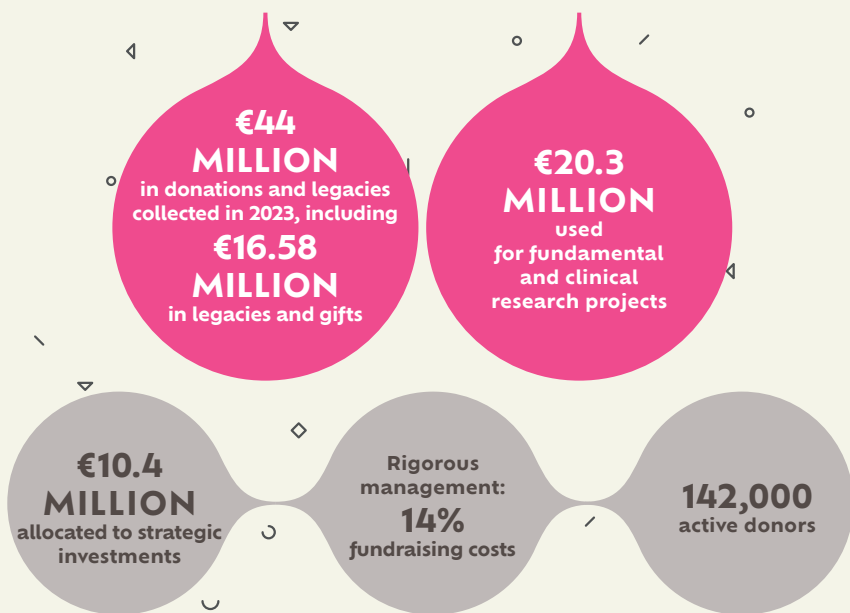


SUSTAINABLE SUPPORT FOR RESEARCH

The generosity of individuals, associations, companies and large donors is essential in the fight against cancer.



As a private, not-for-profit healthcare establishment recognised as being in the public interest, Gustave Roussy and its Foundation have been authorised to receive donations and legacies since 2009, with the «Don en confiance» approval of the Comité de la Charte.





***Our ambition:
to act from
pre- to post-cancer.
Together, we are
innovating to offer
ever more effective
and personalised
solutions to build a
better future in the
fight against cancer.***



▶ Managing Director, Gustave Roussy